



Quick Installation Guide



FCC Statement

This equipment has been tested and found to comply with the limits for a Class B digital device, pursuant to part 15 of the FCC Rules. These limits are designed to provide reasonable protection against harmful interference when the equipment is operated in a commercial environment. This equipment generates, uses, and can radiate radiofrequency energy and, if not installed and used in accordance with the instruction manual, may cause harmful interference to radio communications. Operation of this equipment in a residential area is likely to cause harmful interference in which case the user will be required to correct the interference at his own expense.

FCC Caution: Any changes or modifications not expressly approved by the party responsible for compliance could void the user's authority to operate this equipment.

This device complies with part 15 of the FCC Rules.

Operation is subject to the following two conditions:

(1) This device may not cause harmful interference, and (2) this device must accept any interference received, including interference that may cause undesired operation.

The manufacturer is not responsible for any radio or TV interference caused by unauthorized modifications to this equipment.

NOTE:

(1) The manufacturer is not responsible for any radio or TV interference caused by unauthorized modifications to this equipment.

(2) To avoid unnecessary radiation interference, it is recommended to use a shielded RJ45 cable



CE Mark Warning

This is a Class B product. In a domestic environment, this product may cause radio interference, in which case the user may be required to take adequate measures.

NOTE:

(1) The manufacturer is not responsible for any radio or TV interference caused by unauthorized modifications to this equipment.

(2) To avoid unnecessary radiation interference, it is recommended to use a shielded RJ45 cable.

1 Package Contents



P200



Ethernet Cable

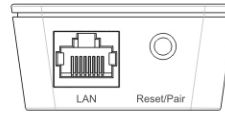


CD-ROM



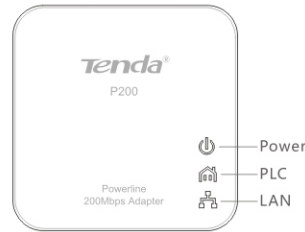
Quick Installation Guide

2 Interface /Button Overview



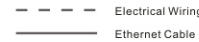
Interface /Button	Description
LAN	RJ45 port: Connect it to a PC or other network devices using an Ethernet cable
Reset/Pair/Power Save	System Restore/Pair: Press for 1-3 seconds to pair with other adapters; press for 6-10 seconds to disconnect from the existing network; while pressing for over 12 seconds, system will be restored to factory default settings

3 Front Panel Overview

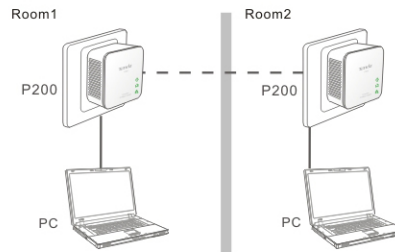


LED	Color	Status	Description
Power	Green	Off	The device is NOT receiving electrical power
		Solid	The device is receiving electrical power
		Fast Blink	Connecting to other Powerline devices
		Slow Blink	The device blinks every 4 seconds under power saving mode
PLC	Green	Off	The device is NOT connected to a powerline network
		Solid	The device is connected to a powerline network but is not transmitting data
		Blink	The device is transmitting data
LAN	Green	Off	Cable NOT connected
		Solid	Cable connected

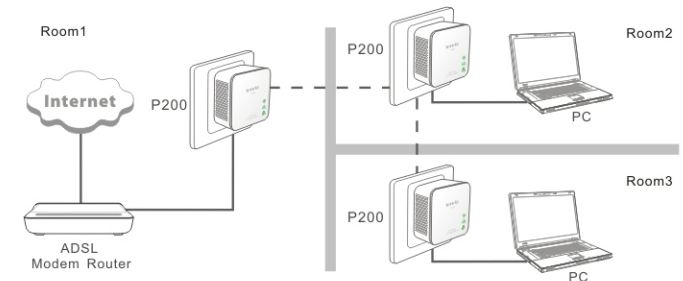
4 Hardware Installation



Method 1: As seen below: Establishing network for rooms under a single electric meter using the Tenda P200 devices requires no extra cable deployment. Simply plug two P200 devices into the wall outlets in such rooms respectively and connect 2 PCs to the 2 P200 devices respectively.



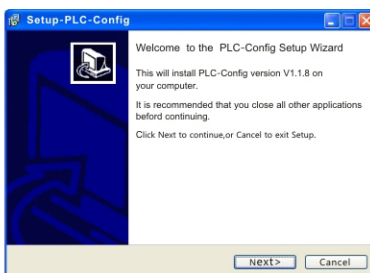
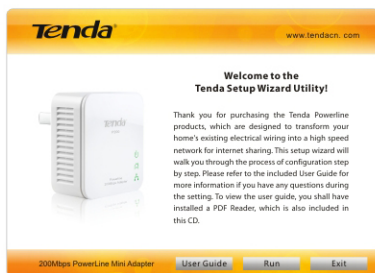
Method 2: As seen below: Rooms 1-3 are under a single electric meter. Connect the first P200 in room 1 to an ADSL Modem Router using an Ethernet cable, the second and the third P200 to the wall outlets in room 2 and room 3 respectively. Then PCs connected to the second and third P200 will be able to communicate mutually and share the ADSL Internet connection.



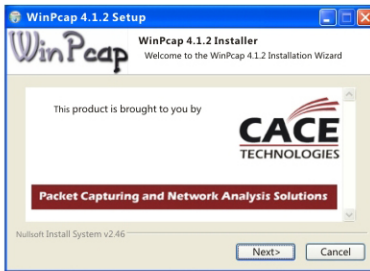
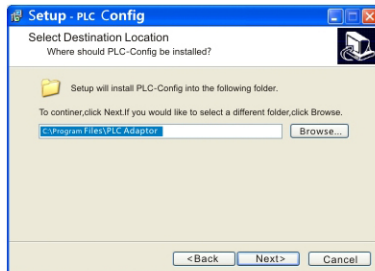
5 UI Installation

To install the device utility, do as follows

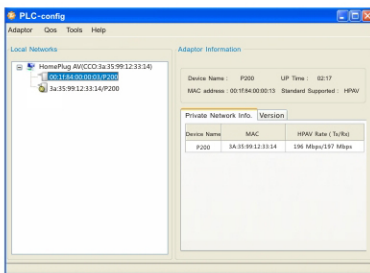
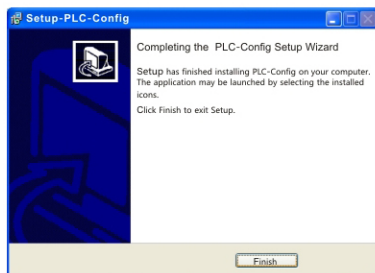
1. Insert the included CD into your PC's drive and below screen will pop up. To read User Guide, click the "User Guide" button. To install the utility, click the "Run" button. Please click "Run" to start installation.
2. Click "Next" on the screen below.



3. On below screen, you can decide where to install the utility. To change default directory, click the "Browse" button; otherwise click "Next".
4. In order to properly install the utility, you will need to install WinPcap plug-in. Simply click "Next" to install it.



5. Click "Finish" to complete and exit from the install wizard.
6. Double click  on your desktop to display below screen.



FAQs :

Q1. What is Powerline networking?

A: Powerline technology upgrades your existing electric wiring, enabling transmission of both network data and electric power in a single power line at a high speed of up to 200Mbps, low cost and with better stability while without new wires required.

Q2. Can a single Powerline adapter establish a Powerline network?

A: No. A minimum of 2 powerline adapters are required. One should be connected to an ADSL Modem or Router, the other to a PC.

Q3. Do I need to install a utility to use the device?

A: No. The device is plug-&-play powerline adapter. Two such devices connected to the same electric meter are able to connect to each other automatically, no configuration required. Yet, there is still an included utility for advanced features such as QoS, private network, etc. See User Guide for details.

Q4. What is the maximum distance that a Powerline adapter can transfer?

A: Up to 300m can be reached with least interference. However transmission rate decreases gradually beyond 100m.

Q5. What are the factors that may adversely affect Powerline communication performance?

A: Chargers, high-frequency devices, power adapters, poor electric wires and power strips, etc may adversely affect the performance of Powerline communication. So, for optimal result, it is advisable to connect the device to a regular wall outlet without any other devices connected to the same outlet.

Q6. Can Powerline devices of different brands communicate with each other?

A: Yes. This Tenda Powerline adapter complies with HomePlug AV standard and thus can communicate with other manufacturers' HomePlug AV-compliant Powerline devices.

Manufacturer: SHENZHEN TENDA TECHNOLOGY CO.,LTD.
 Address: Tenda Industrial Park, No. 34-1, Shilong Rd., Shiyan Town, Bao'an District, Shenzhen, P.R.China 518108
 Technical Support: tenda@tenda.com.cn
 Telephone: 0086.755.2765.7180
 Email: tenda@tenda.com.cn
 Website: http://www.tenda.com.cn & http://www.tenda.cn